



Over five thousand photographs from many private collections were inspected in assembling the carefully edited selection which decorates the walls of the "Frontier Shack." Portraits of national heroes, soldiers, frontiersmen, actors, actresses, athletes are augmented by posters, advertisements and playbills of the period.

Windows at the sides, smoked and stained; antique mirrors, rifles, horns, and other typical ornaments add to the historic interest of this unusual rendezvous. On one of the walls hangs one of the original rifles supplied to workmen for their protection against the Indians and for



Among the many unique facilities for your enjoyment en route on the "Frontier Shack," "City of Denver" is the "Frontier Shack." Situated just forward of a western frontier shack of the reproduction of a western frontier shack of the period between the close of the Civil War and the early "90's." It has the intriguing atmosphere of hospitality so characteristic of the historic hostleries which were landmarks of early pioneer days along the Overland Route.

The walls and ceilings are of unfinished and unmatched white pine boards, face nailed and of uneven lengths and widths. The flooring is of old-fashioned scrub oak, also unmatched, face nailed and of uneven widths and lengths. From the walls protrude long, square iron spikes for coats and hats.

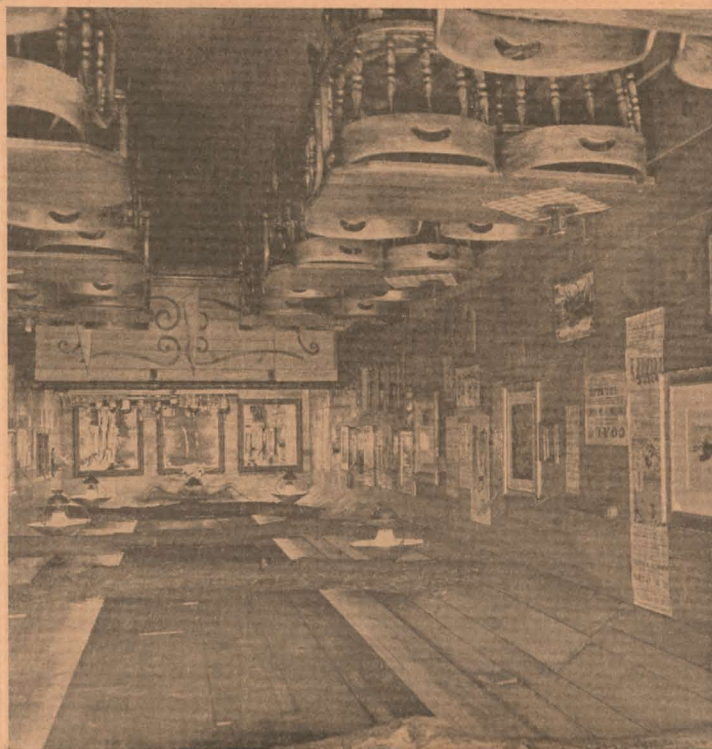
Tables for four on either side of the room are hinged to the walls and are of cleated type rough

The "Frontier Shack" was conceived by the American artist, Wall Kuhn, and assembled under his supervision. In carrying out the authentic reproduction of a popular type tavern of olden days, the artist kept in mind the point of view of the host, his guests of the period, and their tastes.

The "Frontier Shack" was built into the train as an added feature for the pleasure of coach as well as Pullman sleeping car travelers on the "City of Denver." Guests aboard the train will find a visit to this car interesting and worth while.

Historical Museum in Omaha.

Union Pacific. A fine pair of steer horns at the end of the car is an interesting relic dating back to 1876, and furnished by the Union Pacific securing game for food during the building of the



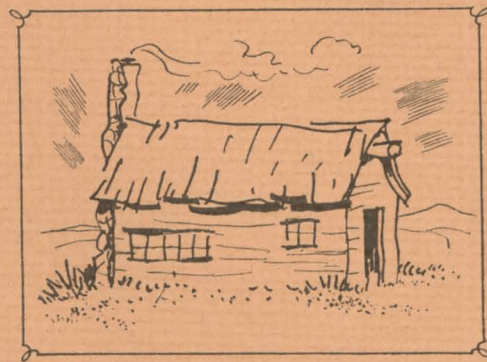
The Streamliner

CITY OF DENVER

Between Chicago and Denver

Union Pacific Railroad Chicago & North Western Ry.

THE FRONTIER SHACK



A unique feature
of the Streamliner
City of Denver

