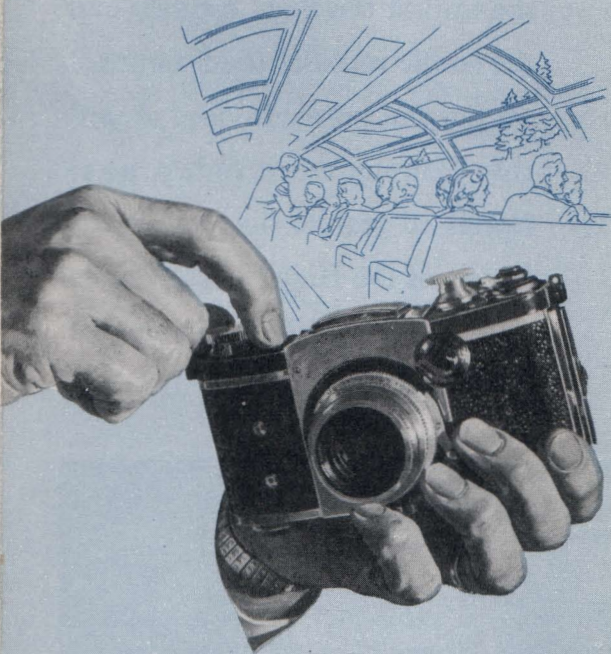
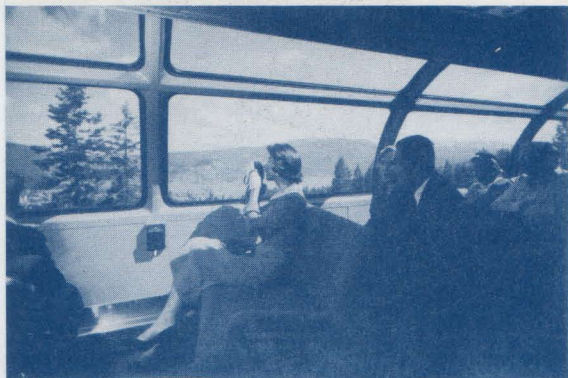


*see the High Sierra  
by day and by DOME!*



*on the*  
**OVERLAND**  
**Southern Pacific**

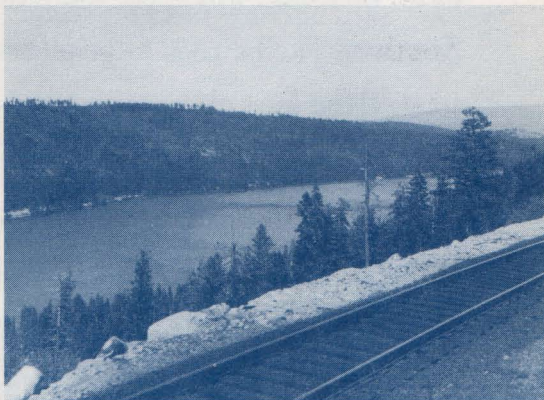
Going east to St. Louis on the *San Francisco Overland*, you follow the trail of the Pony Express and the scenic route of the first trans-continental railroad. And aboard this famous train today, as it climbs to granite heights and fir forests of the High Sierra, you do your sightseeing from one of S.P.'s fabulous Dome Lounge



- On the terrace deck of the *Overland's* Dome Lounge Car, you will enjoy unrivalled views of Western scenery.

Cars—every seat “under glass” in lounge and upper terrace deck.

Arrange for luxurious Pullman  
space or economical Chair Car



● The *Overland* passes historic Donner Lake.

seats. Through cars go via Den-  
ver and Kansas City to St. Louis,



● You will pass through the Truckee River Canyon  
in the High Sierra.

with good connections for points beyond. Your trip on the *Overland*, we think, will show you how Southern Pacific tries to give customers the best there is in modern, progressive railroad service—whether they or their freight ride Southern Pacific.



- S.P.'s *Overland* crosses Utah's Great Salt Lake on the 30-mile Lucin Causeway.

